



Landler

Let's turn nature into wealth

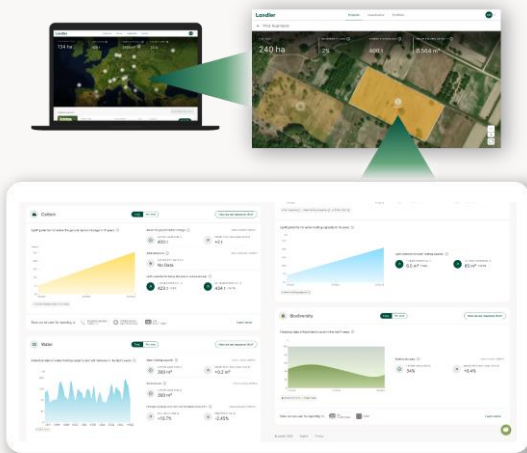
THE
LANDBANKING
GROUP

June 11, 2024

landler.io: turn nature data into business value

1. Measure

Measure land-based risks i.e. hazards, climate change risk and opportunities



Bavarian dairy farmers signed up to landler and assessed the natural capital of their polyons.

An initial 100k of investments transacted by landler. A major German retailer is about to sign up with landler to book investments into more regenerative practices of its fruit and veg portfolio as intangible assets.

2. Manage

Full overview over nature-related risks and opportunities to inform action.

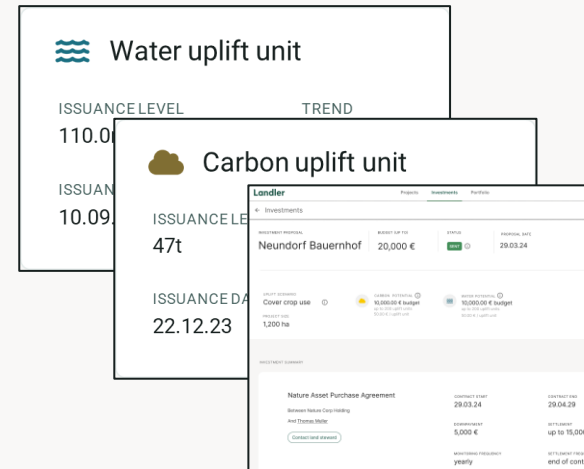
NAME	SIZE	TYPE	BIODIVERSITY ZONE	CARBON STORAGE (t)	WATER HOLDING CAPACITY
Ackerland	12,00 ha	Analysiert	5%	259 t/ha	115 m³/ha
Bumblebee	10,00 ha	Analysiert	7%	119 t/ha	207 m³/ha
Cashmere	14,00 ha	Analysiert	12%	400 t/ha	198 m³/ha
Duffeld	15,00 ha	Analysiert	4%	112 t/ha	121 m³/ha
Eggplant	10,52 ha	Analysiert	5%	321 t/ha	98 m³/ha
Freisia	21,07 ha	Analysiert	4%	700 t/ha	322 m³/ha

Carbon balance	Water balance	Biodiversity balance
From below ground carbon data	From water holding capacity data	From biodiversity zones
CURRENT BALANCE: 400 t +3%	CURRENT BALANCE: 198 m³ +4%	CURRENT BALANCE: 12%
1 YEAR CHANGE: +37 t	1 YEAR CHANGE: +40 m³	1 YEAR CHANGE: +0.8%
OPENING BALANCE: 363 t	OPENING BALANCE: 158 m³	OPENING BALANCE: 11%

The dairy uses the natural capital performance data to identify e.g. climate related agricultural risks mitigating options.

3. Invest

Improve nature for your business and invest in Nature Equity.



The dairy attracted a business consultancy to buy the farmers natural capital uplifts, providing the finance for the mitigation options.

4. Capitalize

Book Nature Equity as intangible asset on your balance sheet.

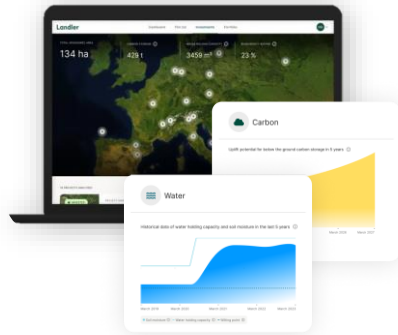
Who ever holds the nature uplifts, Nature Equity, the dairy or the business consultancy, is able to capitalize those as an intangible asset.

In different settings, both the intermediary (e.g. dairy) or the „outcome based funder“ (e.g. business consultancy) were able to book the investment as an intangible asset on the balance sheet.

Nature Equity Assets

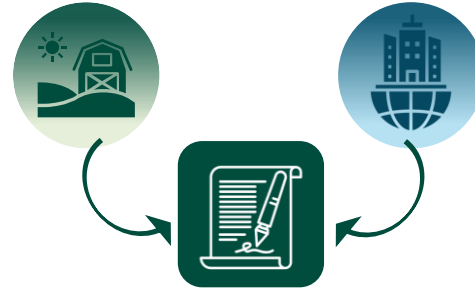
'How to get them'

Identify investment opportunity



Screen your supply chain to identify the producers with the highest business potential

Contract & investment



Enter into a forward purchase agreement with the producer with the objective to reward positive nature outcomes



(Optionally) Enabling investment to the producer to perform restoration practices

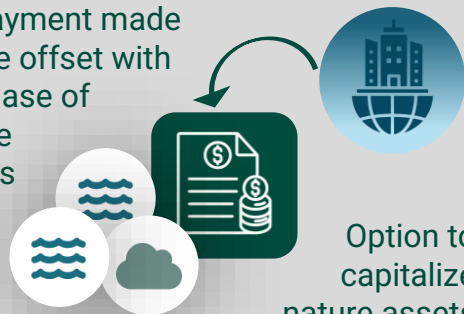
Land-use changes



Producer implements regenerative practices

Financial Reporting

Prepayment made will be offset with purchase of nature assets



Option to capitalize nature assets on the balance sheet

Issuance & transfer of Nature Assets



As per forward agreement, reward producer for achieving positive nature outcomes

Issuance of Nature Equity Assets upon delivery of positive outcomes

Monitoring of natural capital



Continuous measurement of outcomes in natural capital on NCA (visible to both)

How we measure

landler.io combines satellite and field data to provide outcome-based measures for natural capital accounting. Based on latest science, in line with international accounting standards.



Scalability through Earth Observation

We use several types of satellite data: Multispectral, Radar (SAR), Passive Microwave, Thermal

Model validation through:



University of Oxford

Antonelli
CAPTAIN



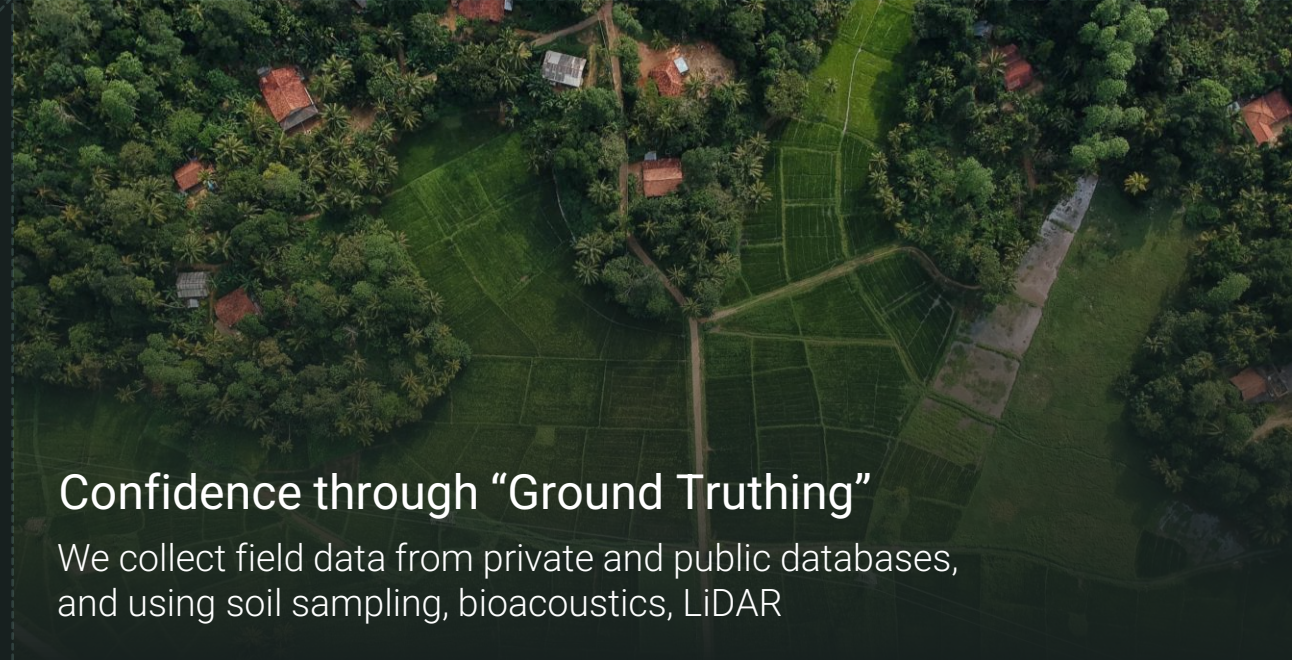
SENCKENBERG
world of biodiversity



Stanford University

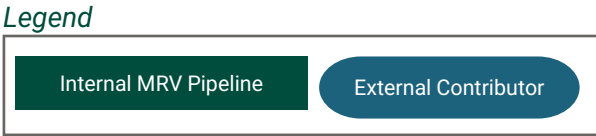
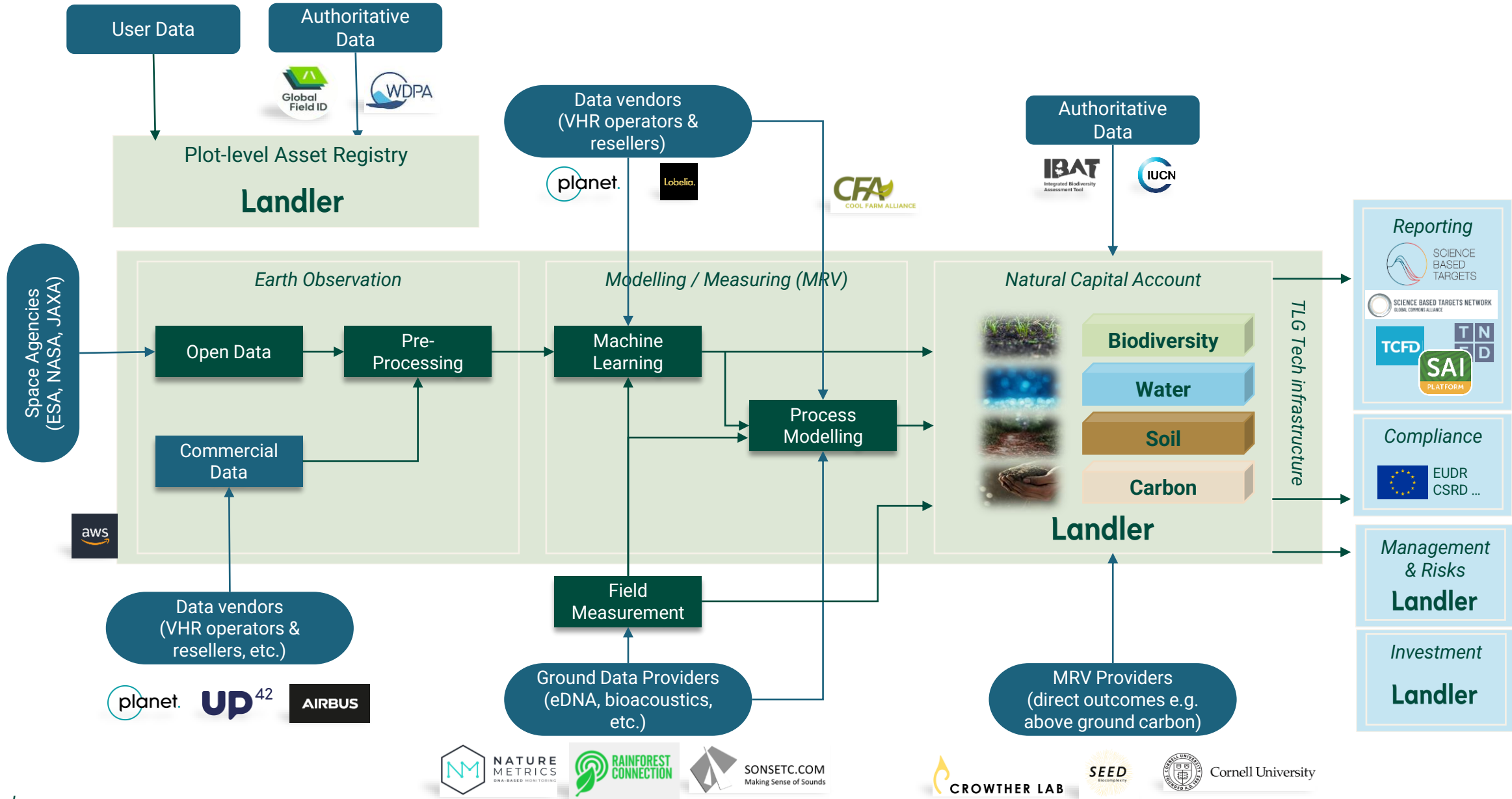


SEED Biocomplexity



Confidence through “Ground Truthing”

We collect field data from private and public databases, and using soil sampling, bioacoustics, LiDAR



Join us

THE
LANDBANKING
GROUP

Join us at COP16

Leading the way toward a nature-based economy
at **The Global Biodiversity Conference**

21 October to 1 November 2024
Cali, Colombia



Through Landler.io, our natural capital management platform, pioneering companies like yours have started measuring, scaling, and profiting from investments in nature and biodiversity. By leading the way to a nature-based economy, you're setting an example for others to follow. COP16 is the ideal venue to showcase your trailblazing efforts, further engage in our journey and take part in a global conversation.

Here's how you can get involved:

1. **Events:** Join us on events with business leaders, i.e. at **Bloom 24**
2. **Featured Projects:** Become one of our **featured projects**, in all communications
3. **Network:** Connect with our thriving **Nature Tech & Finance community**.

Join our featured projects

 **Verified Nature Unit**
A transformative conservation financing mechanism and a new solution to beyond the value chain mitigation

 **Nature Equity Fund** to protect high-integrity forests
A multiple stakeholder-initiative together with the Global Innovation Lab for Climate Finance

 **Your project**
Feature your project in our COP16 communications!

